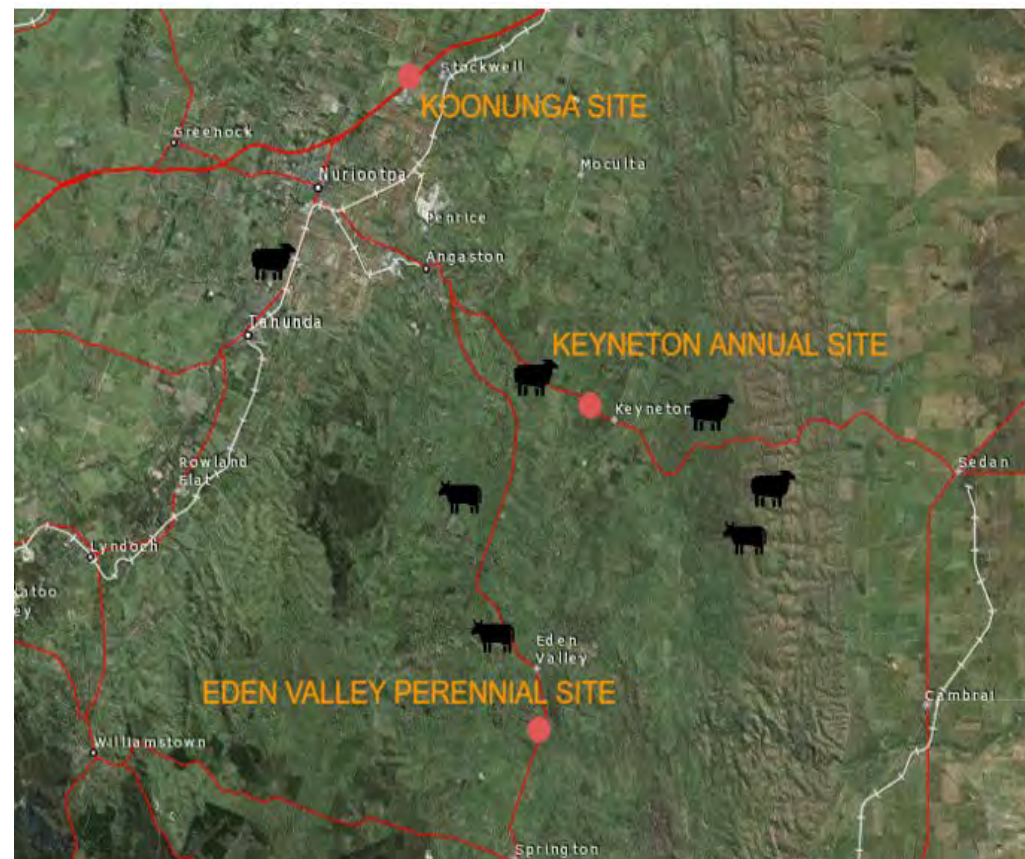
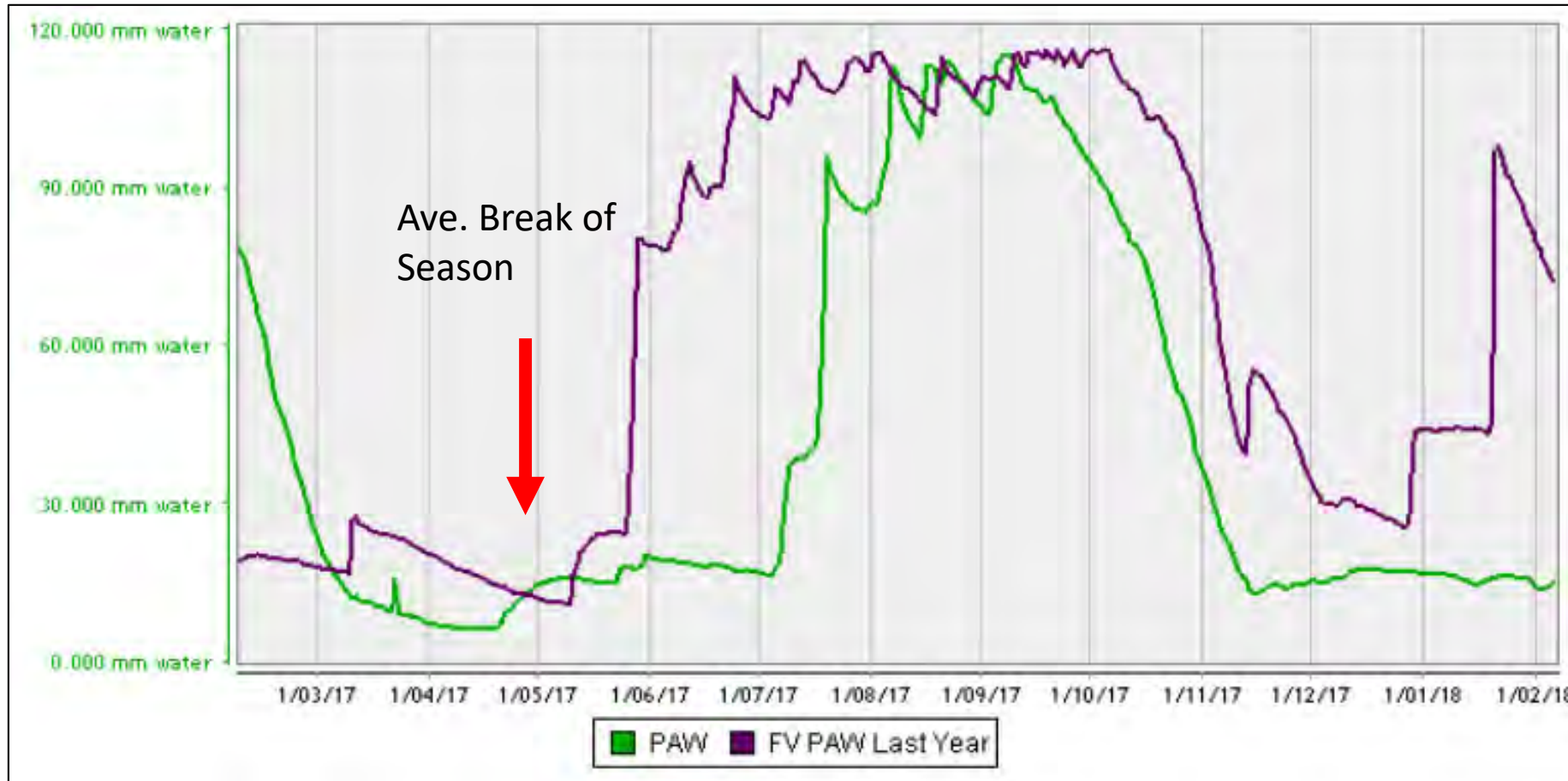




Maximising Pasture Production in a Variable Climate Producer Demonstration Site



Maximising Pasture Production in a Variable Climate Producer Demonstration Site



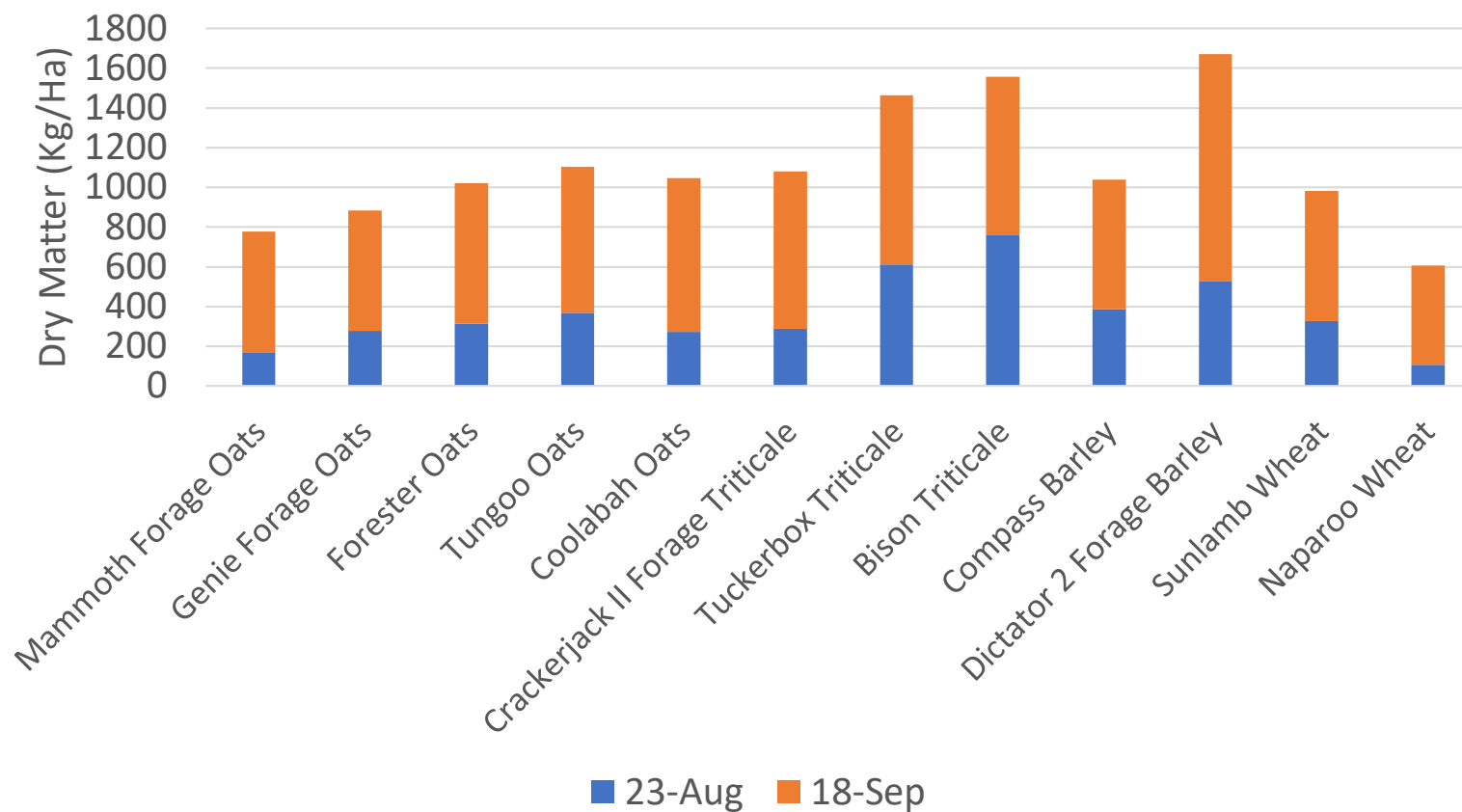
2016: June - December

6-7 Months Growing Season

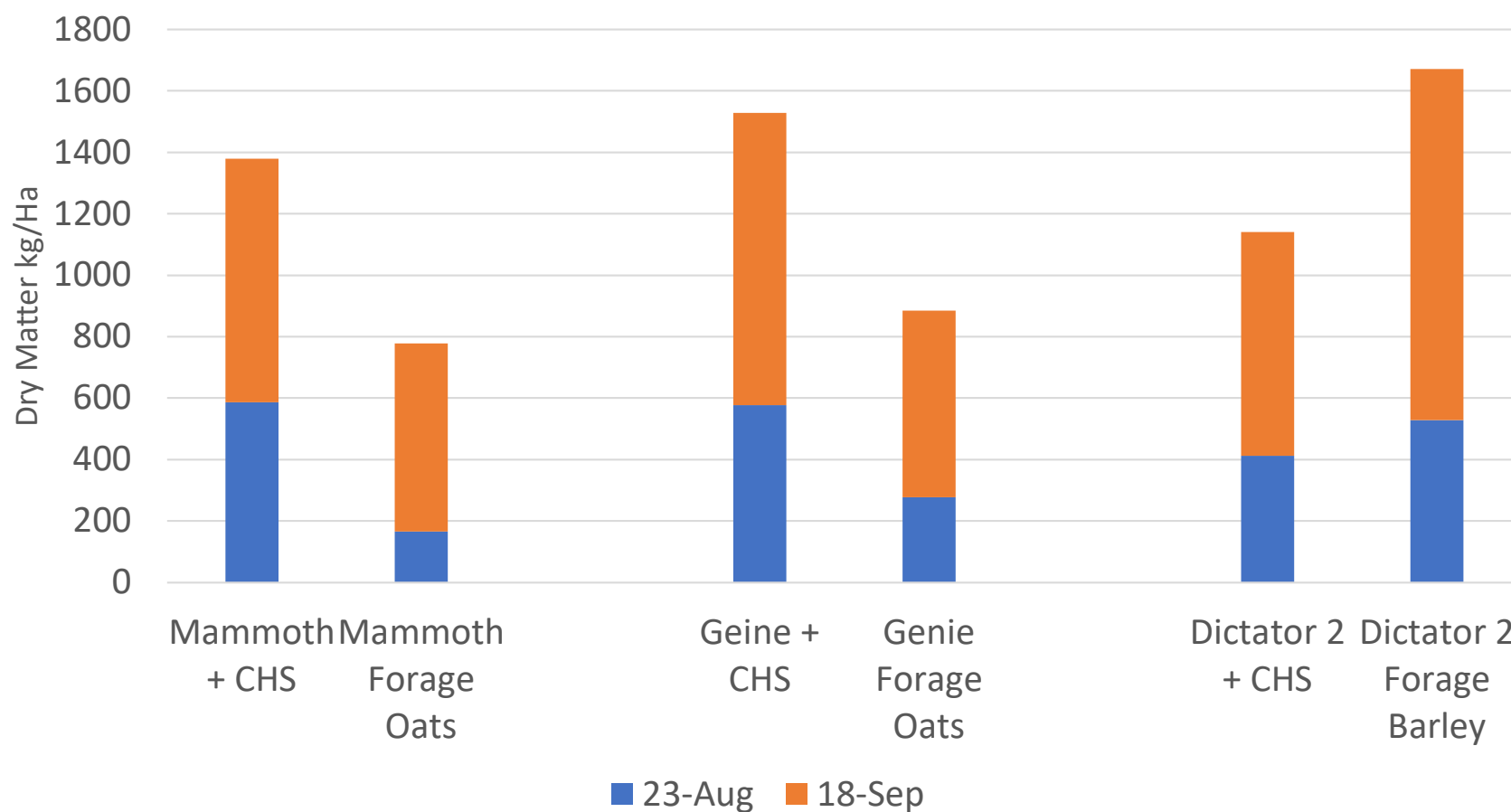
2017: Mid July- Early November

4 months Growing Season

Late Winter and Early Spring Production of Cereals KEYNETON 2017

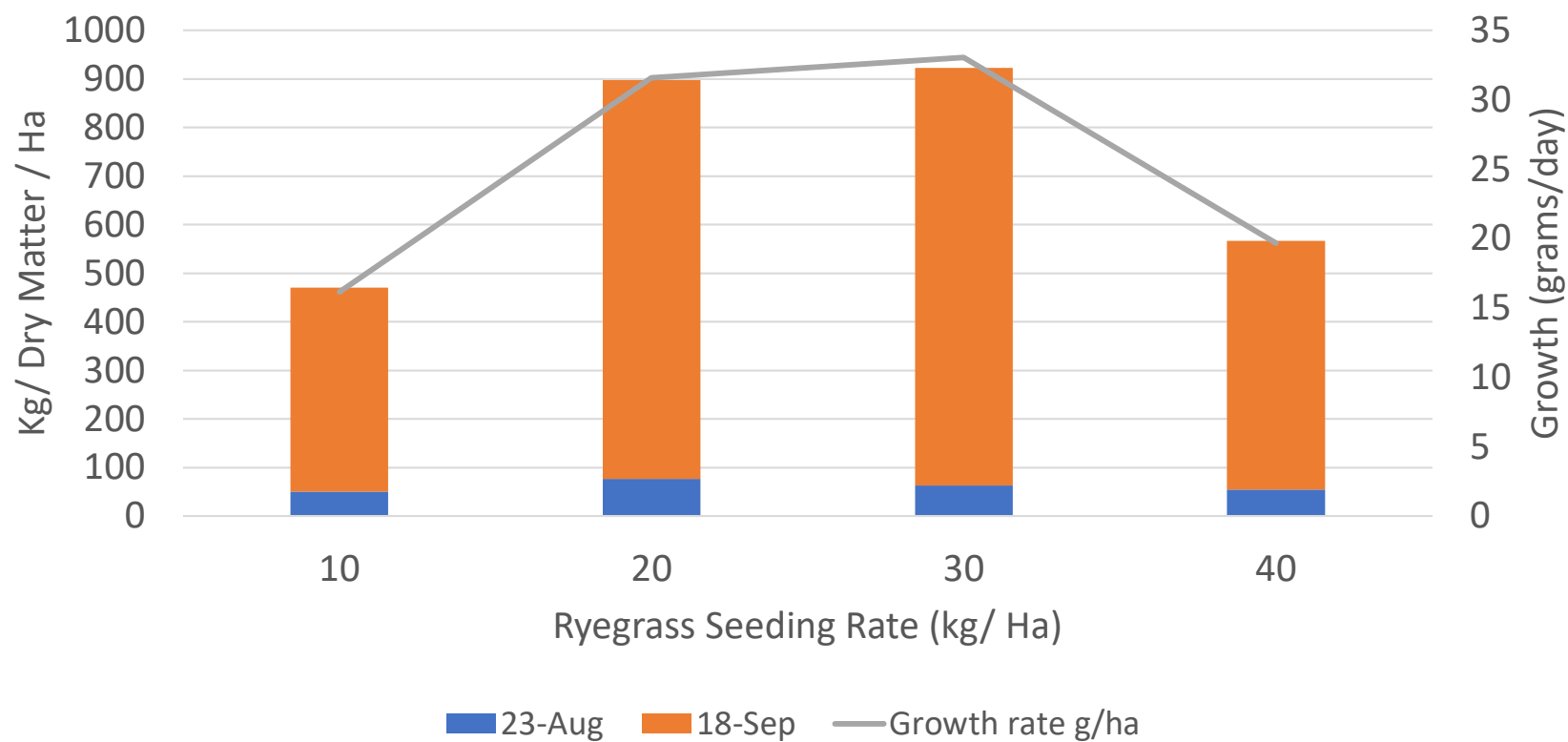


Dry Matter Production of Cereals and Cereal/Ryegrass Mixes KEYNETON 2017



- Increase Dry Matter
- Increase Quality
- Opportunity for late spring rainfall growth

Seeding Rates for Spring Growth of Ryegrass KEYNETON 2017



Matt Neldner: Marananga

Total growing season rainfall
345mm



Moby Barley

- Early maturing variety
- Min Rainfall 350mm
- Fast establishment and winter growth

In 62 days: 3000 Kg DM/Ha

= 48kg DM/ha per day

250 Ewes with lambs @ foot



14 Days Grazing Early July

- IN: 3000 kg Dm/Ha
- OUT: 750 kg DM/Ha
- 2300kg DM/ha green DM utilised
- Stocking Pressure of 165 DSE per Ha
- Stocking Rate 6.3 DSE/ha



Lamb weight gain:

- 400g/head/day top lambs
- 200g/hd/ day bottoms

Green Moby Barley
estimated to be 12ME,
25% protein and 35% NDF



Grazing improved hay quality

- ME 9.7 for cereal hay is excellent
- Protein of 12% high
- NDF 55% is average

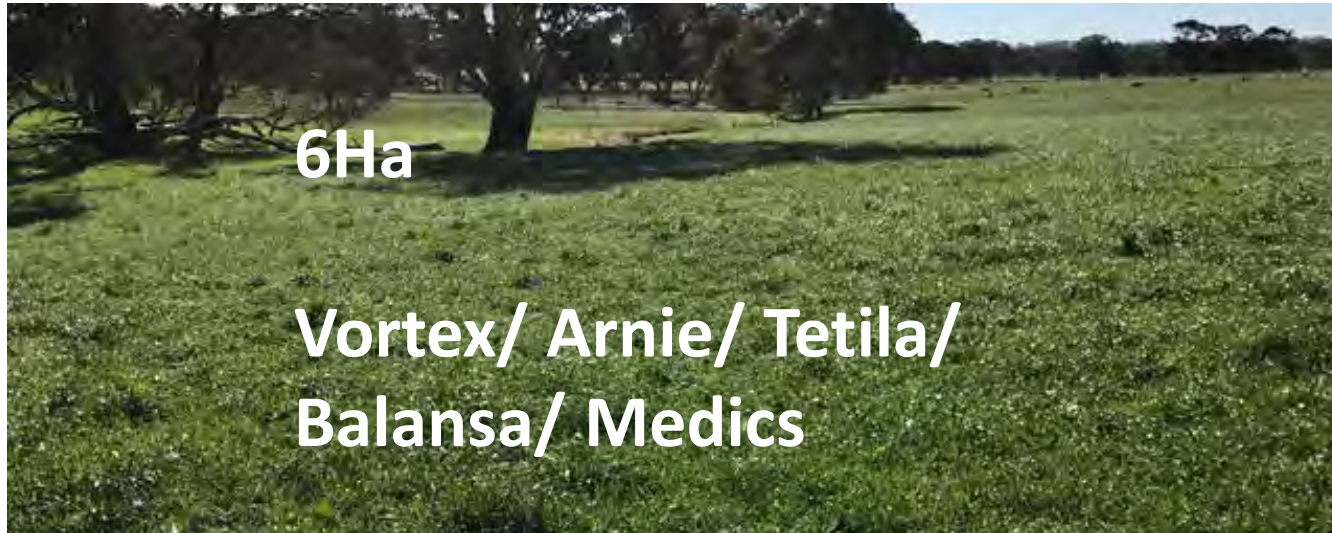
250 dry ewes - maintained for 97 days

Cost to produce 1t hay =\$64 this doesn't include cartage, feeding out and growing cost

Therefore it cost 8.3 cents per day to maintain the ewes at baling cost price

Bill & Mandy Evans/ Anthony Steinert: Keyneton

Total growing season rainfall 344mm



Ryegrasses

- Early and late varieties
- Fast spring growth
- Optimise late spring rainfall



9 Days Grazing in Early August

- IN 2000kg Dm/Ha
- OUT 500 kg/Dm/Ha

4 days grazing September

- IN 2300 kg Dm/Ha
- OUT 750 kg Dm/Ha

- 13 Days grazing

1270kg DM/ha green dry matter utilised
Stocking Pressure of 98 DSE per Ha
Stocking Rate 3.5 DSE/ha



6.93t of silage per ha or 2.3t DM/ha

- DM 33.3% DM which is good to allow for fermentation
- ME 9.7 – very good
- Protein 9% - ok
- 59.6% NDF is high

250 dry ewes could be maintained for 48 days

19 cents per day to maintain the ewes at cost of baling the silage.

Further grazing of regrowth through November

Jason & Kirsty Treloar- Perennial Native Pastures

Total growing season rainfall: 250mm



- Winter: 19 wallaby grass plants/ m
- Summer: 4 summer active c4 plants/m
- 650ha paddock
- 630 merino ewes, LAMBING May - June
- Stocking Rate: 0.5 DSE/Ha
- Grazing May to October 5 months
- September marked 722 lamb- 115%
- October- after weaning- 35 kg
- Average weight gain 250 gms/hd/day

Toby Rosenzweig: Leafmore Brassica
Total growing season rainfall: 250mm



30 Ha- sown 5 September 2016/ resown 12 Oct

- 21st December, 10 weeks after sowing,
- 500 of the lightest ewe hoggets
- Grazing for 43 days= 4.7 DSE/Ha SR
- June- 0.5kg heavier and cut 300 grams more wool- 152kg extra