

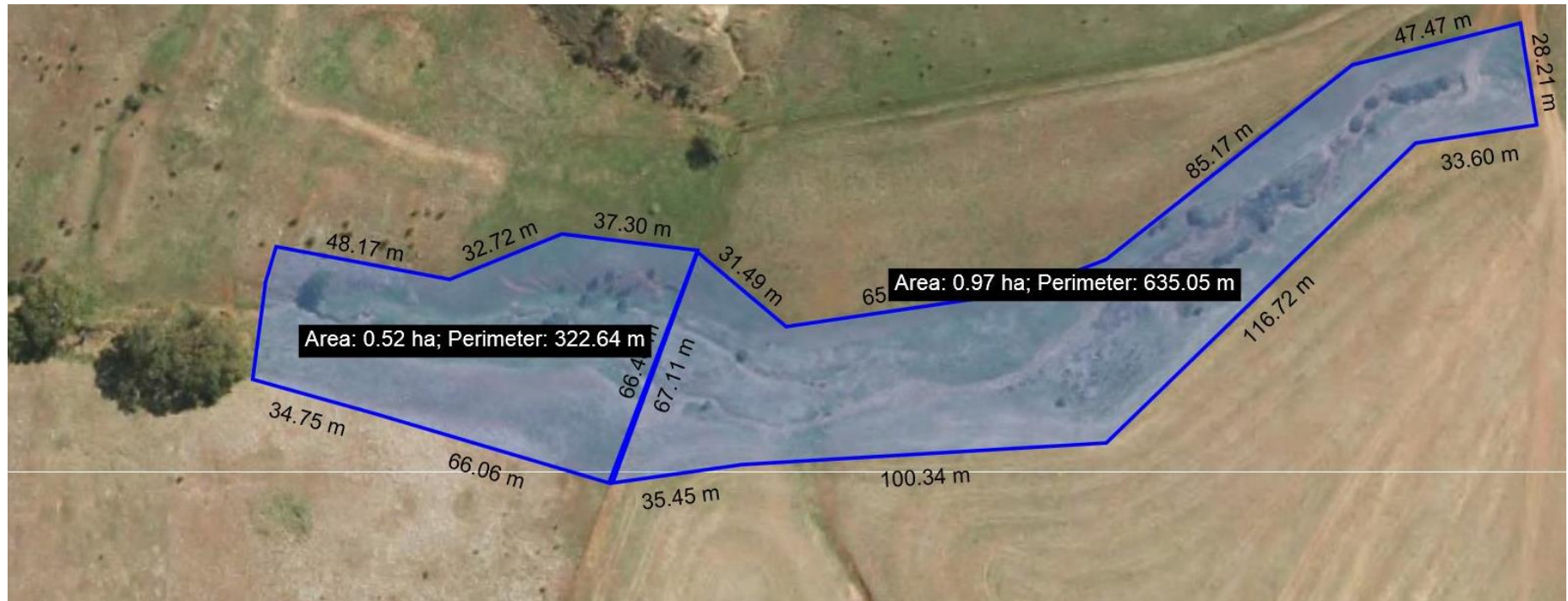


# BIGG Watercourse Rehabilitation































Length of creekline – Approx. 260 metres

10 lots of plots across both sides of the waterway

Plots are approximately 52 metres x 10 metres comprising of:

- 2 x Control Plots
- 2x Native Grasses – 130 native grasses planted per plot.
- 2x Trees – Approx. 22 trees per plot.
- 2x Understorey - 50 mid/lower storey, 15 rushes in creek line.
- 2x Trees/Understorey mix – Approx. 20 trees per plot, 45 mid/lower storey, 15 rushes in creek line.

Fauna and Flora survey- 40 different plants, 17 difference birds and frogs/kangaroos and foxes. This will be repeated in the long term future to determine the effectiveness of the plant communities.





## Grasses

Austrodanthonia spp

Dicanthium sericeum

Themeda

Austrostipa spp.

## Mid Storey

Vittadinia

Acacia acacinea

Acacia retinoides

Acacia paradoxa

Acacia pycnantha

Acacia myrtifolia

Bursaria

Hakea spp.

Dodonea

Calytrix tetragona

## Understorey

Juncus pallidus

Juncus subseondus

Carex tereticaulis

Cyperus vaginatus

Lomandra spp

Convolvulus

Hardenbergia

Dianella

## Trees

Eucalyptus leucoxylon

Eucalyptus odorata

Allocasuarina verticillata

Eucalyptus camaldulensis







July 2015



December 2015





May 2016



July 2015



December 2015





May 2016



Ground Cover After Fence Erection 2015/16

