



Brett Nietschke <brett.nietschke@gmail.com>

The BIGG Bulletin -May 2017

BIGG <georgie.keynes@biggroup.org.au>
Reply-To: BIGG <georgie.keynes@biggroup.org.au>
To: Brett.nietschke@gmail.com

31 May 2017 at 12:15

The latest news from the Barossa Improved Grazing Group

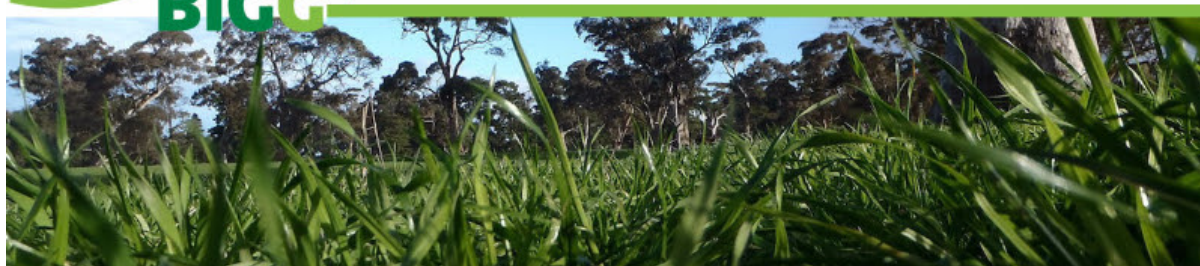
[View this email in your browser](#)



Natural Resources
Adelaide and Mt Lofty Ranges



Natural Resources
SA Murray-Darling Basin




The BIGG Bulletin

May 2017

In this issue

- Upcoming BIGG Climate Workshop 22 June
- BIGG webinar- Working with the Season to Boost Production
- Development of BIGG's Pasture Management Decision Tool
- Good Clover/Bad Clover

Upcoming BIGG WORKSHOP: Maximising Profit in a Variable Climate



MAXIMISING PROFIT IN A VARIABLE CLIMATE

CLIMATE OUTLOOK FOR 2017 & BEYOND WITH DR PETER HAYMAN

PRACTICAL MANAGEMENT STRATEGIES FROM DR JASON TROMPF

NUFFIELD SCHOLAR ROBIN SCHAEFER ON USING FORECASTS

HALF DAY WORKSHOP FOR LIVESTOCK PRODUCERS
 THURSDAY 22 JUNE 2017
 8:30-12:15
 MOCULTA SPORTS PARK
 \$25 PER PERSON

REGISTER AT: AGCOMMUNICATORS.COM.AU/CLIMATEVARIABILITY
 MORE INFORMATION: REBECCA BARR, 0402 788 524, ADMIN@BIGGROUP.ORG.AU

This initiative is supported by the South Australian Murray-Darling Basin NRM Board through funding from the Australian Government's National Landcare Programme and NRM levies.

Have you registered for our workshop
Maximising profit in a variable climate?

This half-day workshop features a climate outlook for 2017 and beyond with Peter Hayman and practical management strategies including a practical exercise with Jason Trompf, along with a farmers' perspective from former Nuffield Scholar Robin Schaefer.

[View the Full Program](#)

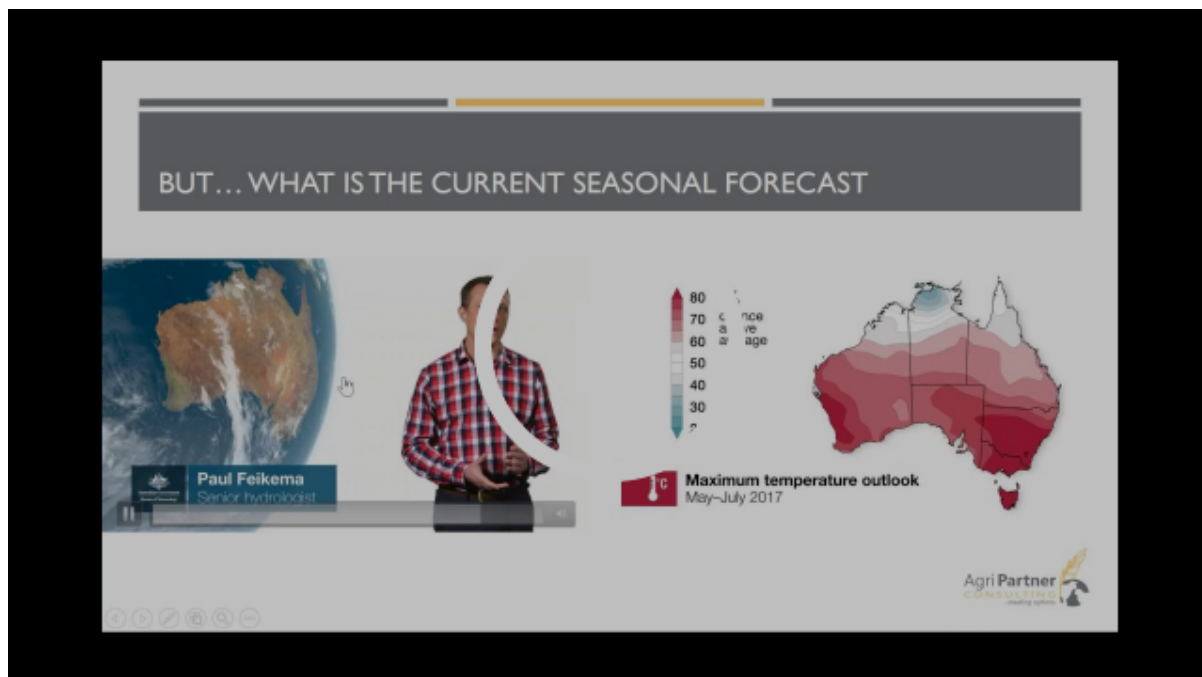
The details:

- Thursday 22 June 8.30am- 1.15
- Moculta Sports Park
- \$25/person
- More info: Rebecca Barr, 0402 788526 admin@biggroup.org.au

TO REGISTER CLICK HERE!

This initiative is supported by MLA and the South Australian Murray-Darling Basin NRM Board through funding from the Australian Government's National Landcare Programme and NRM levies.

Working with the Season to Boost Production WEBINAR



Find out what you can be doing now to help maximise production for the season ahead- CLICK ABOVE!

BIGG's second webinar was held on 17 May with local consultant Hamish Dickson providing food for thought on what we can be doing in our grazing production systems now to maximise our production through the coming season.

Discussion included:

- make the most of the current soil moisture as the forecasts are for a dry spring
- utilise fast growing, early varieties such as cereals which can provide feed through the season, with the opportunity to conserve it for later feed opportunities
- utilise feed budgeting to ensure you are on track all year round
- continually monitor stocking rate and consider opportunities for trading

This project is supported by Meat & Livestock Australia; and the South Australian Murray-Darling Basin Natural Resources Management Board through the NRM levies and funding from the Australian Government's National Landcare Programme.

Development of BIGG's Pasture Management Decision Tool



Tony Randall, Natural Resources SA Murray-Darling Basin with Peter Toome, TOIP at BIGG's Focus Group meeting.

In April, BIGG held a focus group meeting to discuss the development of a web-based pasture management tool for BIGG's Soil Moisture Monitoring project.

The aim of the meeting was to identify the types of decisions the tool could help producers with. Attendees at the meeting heard from:

- Peter Toome (TOIP Managing Director) who discussed the information that will feed into the prediction models for BIGG's decision tool
- Peter Hayman (SARDI Principal Scientist) who discussed how climate information can be used for producer decision-making
- Brett Nietschke (BIGG Technical Facilitator) who gave an overview of the Soil Moisture Monitoring project

Producers identified three key management issues that the tool could help address. These were:

1. Stocking rates - based on current and predicted pasture production on my property, what is my appropriate stocking rate?
2. Sowing of spring/summer crops - based on current soil moisture and forecasted weather conditions, would sowing an out-of-season fodder crop

produce adequate dry matter?

3. Nitrogen fertiliser application - based on current soil moisture and forecasted weather conditions would there be an adequate production benefit in applying nitrogen fertiliser to my pasture?

BIGG has engaged TOIP to develop the underlying models for the decision tool and will soon appoint a web-programmer who will develop the web-based interface for the pasture management tool. So watch this space!

This project is supported by the Adelaide and Mount Lofty Ranges Natural Resources Management Board's Sustainable Agriculture Industry Support scheme, and is funded by the NRM Levy.

Good Clover, Bad Clover



The Mackillop Farm Management Group (MFMG) and AgKI with support from MLA and SheepConnect SA are undertaking a project ('Good clover, bad clover') which will focus on upskilling producers on oestrogenic clover identification and the implementation of practices to improve lamb marking rates.

The first part of the project is a survey of producers to get an indication of the extent of oestrogenic clovers, potential impacts on fertility and producer knowledge about the issue. MFMG is keen to get feedback from producers across the State that have

clover pastures.

The Barossa area is renowned for having oestrogenic pastures so BIGG producers are encouraged to participate through an online survey to help provide information. Please complete the survey on-line via Survey Monkey. The link is http://www.surveymonkey.com/r/Good_clover_Bad_Clover or click on the box below!

Click to Participate in the Clover Survey

From the Inbox...

- Join the Angaston Ag Bureau and Angaston Transport for a '[Heavy Vehicle Info and Animal Welfare Evening](#)'- Angaston- Tues 6 June 7.30pm. Contact Mark Grossman 0408 085 682
- State Forum- [Farming Together](#)- Adelaide Convention Centre- June 6
- New tool which helps with decision making-[AskBill pre-release offer](#)
- Take part in the [Lambing Density Survey](#) to help support the AWI, MLA Lambing Density Project
- Check out the [latest seasonal outlook](#) from the Bureau of Met.
- Save the Date- [SA Community Landcare Conference](#)- Clare Sept 11-13

Your BIGG Contacts

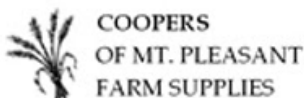
Technical Facilitators:

[Brett Nietschke](#): 0432 804 389

[Georgie Keynes](#): 0409 287 261

Communication Officer:

[Rebecca Barr](#); 0402 788 526



Government of South Australia
Department of Environment,
Water and Natural Resources



Follow BIGG on Facebook



Check out our Website

Disclaimer: No warranty is made that this material is free from computer virus or any other defect or error. It is your responsibility to check this email and any attachments and links for viruses. Any loss/damage incurred by using this material is not the sender's responsibility. The sender's entire liability will be limited to resupplying the material.

Copyright © 2017 Barossa Improved Grazing Group, All rights reserved.

You are receiving this email because you opted in to receive communication from the Barossa Improved Grazing Group and/or attended one of our events.

Our mailing address is:

Barossa Improved Grazing Group
Box 44
Angaston, SA 5353
Australia

[Add us to your address book](#)

[unsubscribe from this list](#) [update subscription preferences](#)

