

Barossa Improved Grazing Group



Government of South Australia  
Adelaide and Mount Lofty Ranges  
Natural Resources Management Board



# BIGG

## Partnership Engagement

[www.bigggroup.org.au](http://www.bigggroup.org.au)

AgEx Forum, 18 March 2014



COOPERS  
OF MT. PLEASANT  
FARM SUPPLIES

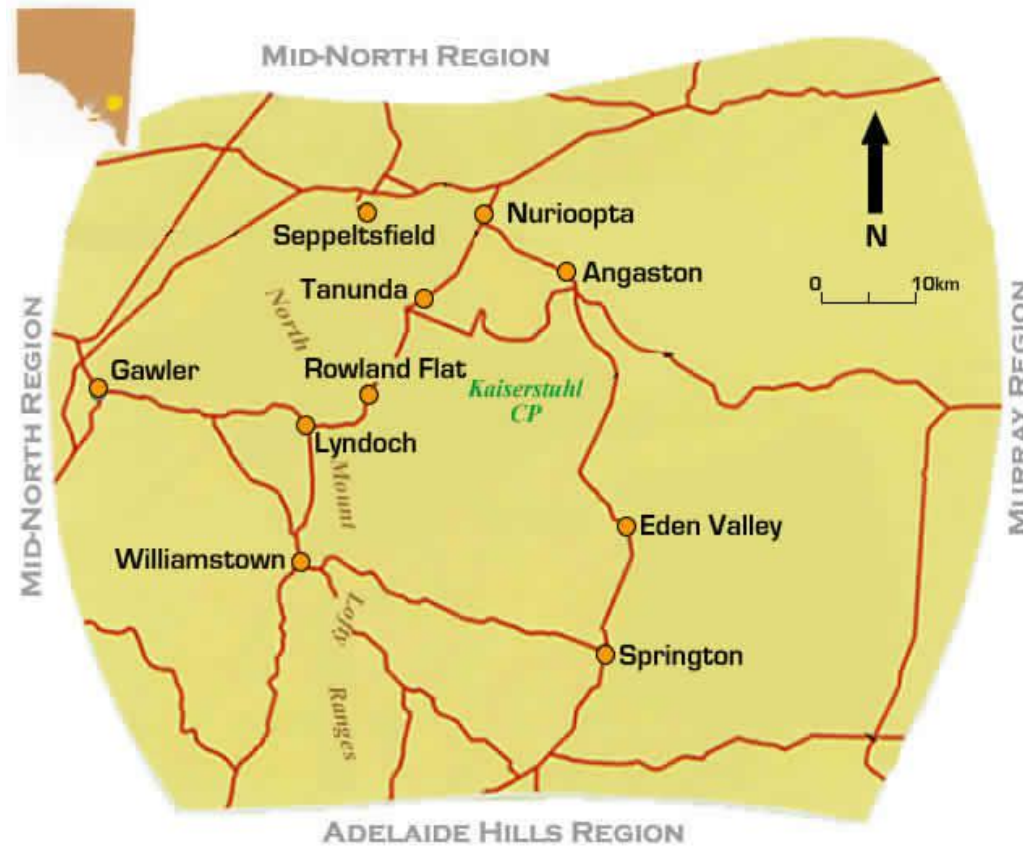


RURAL SOLUTIONS SA

# Barossa Improved Grazing Group



Government of South Australia  
Adelaide and Mount Lofty Ranges  
Natural Resources Management Board



## Local Grower Groups

1. Angaston Ag Bureau
2. Koonunga Ag Bureau
3. North Rhine Sheep Group
4. Mt Pleasant Beef Group
5. Barossa Mid-Nth Dairy Discussion Group



## BIGG Beginnings

- Initiated in 2012, through the *Winter Pasture NRM Project* funded by AMLR NRM
  - improve the capacity of winter pasture production; and
  - achieve on-farm NRM outcomes



## Projects

- Total grant funding: \$280,000
- No. of projects: 10 (5 current)
- Funders: AMLR NRM, CfoC, DEWNR, SC, MLA
- Key current projects:
  - Soil moisture monitoring in local grazing systems (\$45,000)
  - The Barossa Pasture Challenge (\$29,500)





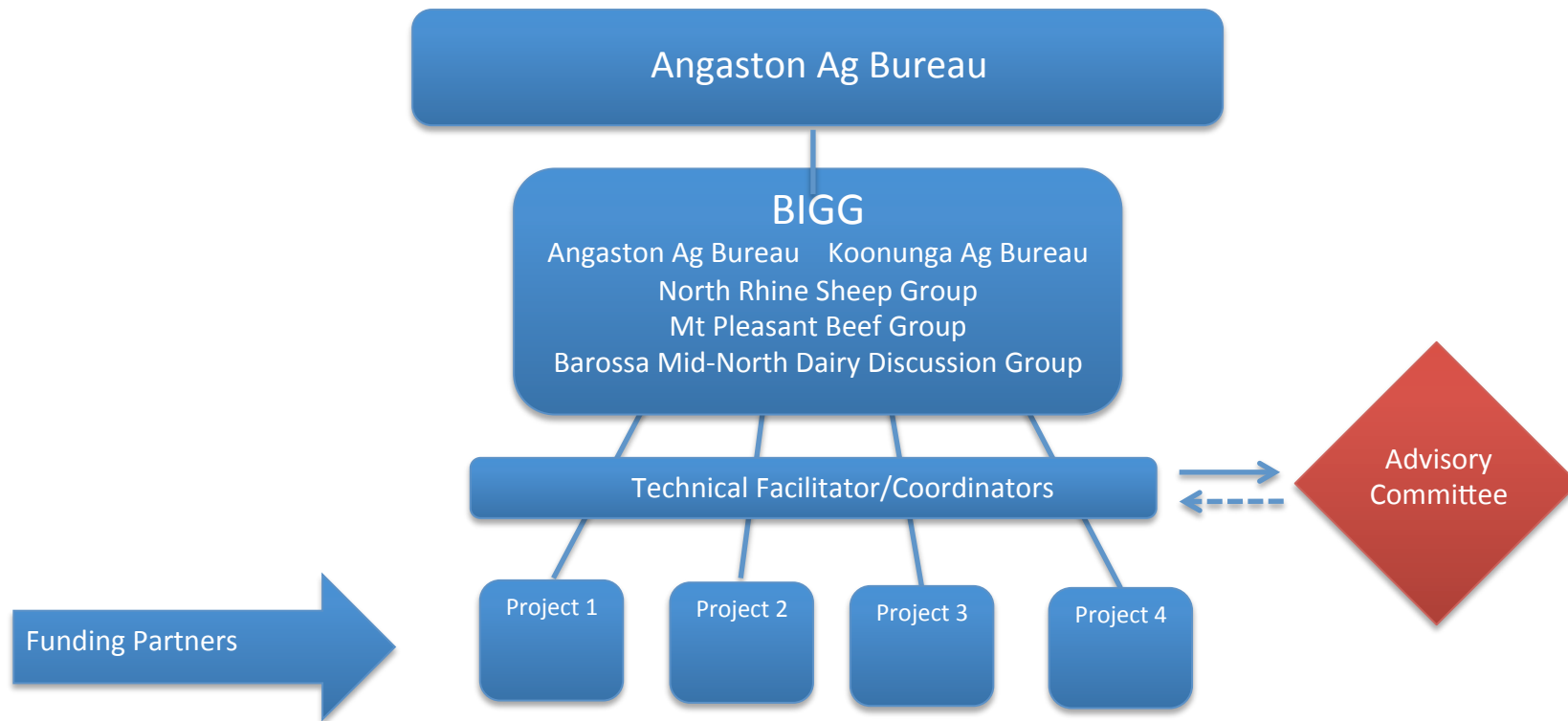
## Partnership Engagement

Grower groups, Industry, Government

- Common interests (productivity & NRM)
- Ensuring broad consultation
- Sharing outcomes (communications)
- Advisory support (technical & strategic)



## Governance Structure





## 1. Working Across Grower Groups

- Example: RAPPA project
  - Grazing management
  - Livestock, cropping & vineyard







## 2. Industry Engagement

- Project outreach
  - Example: workshops/forums
- Project implementation
  - Example: Soil moisture monitoring project







## 3. Government Engagement

- More than just funding .....
- Example: Natural Resources  
Adelaide Mt Lofty Ranges





## Take home message

- BIGG is the platform to bring stakeholders together
- Include all stakeholders in governance structure
- Shared interests = shared outcomes